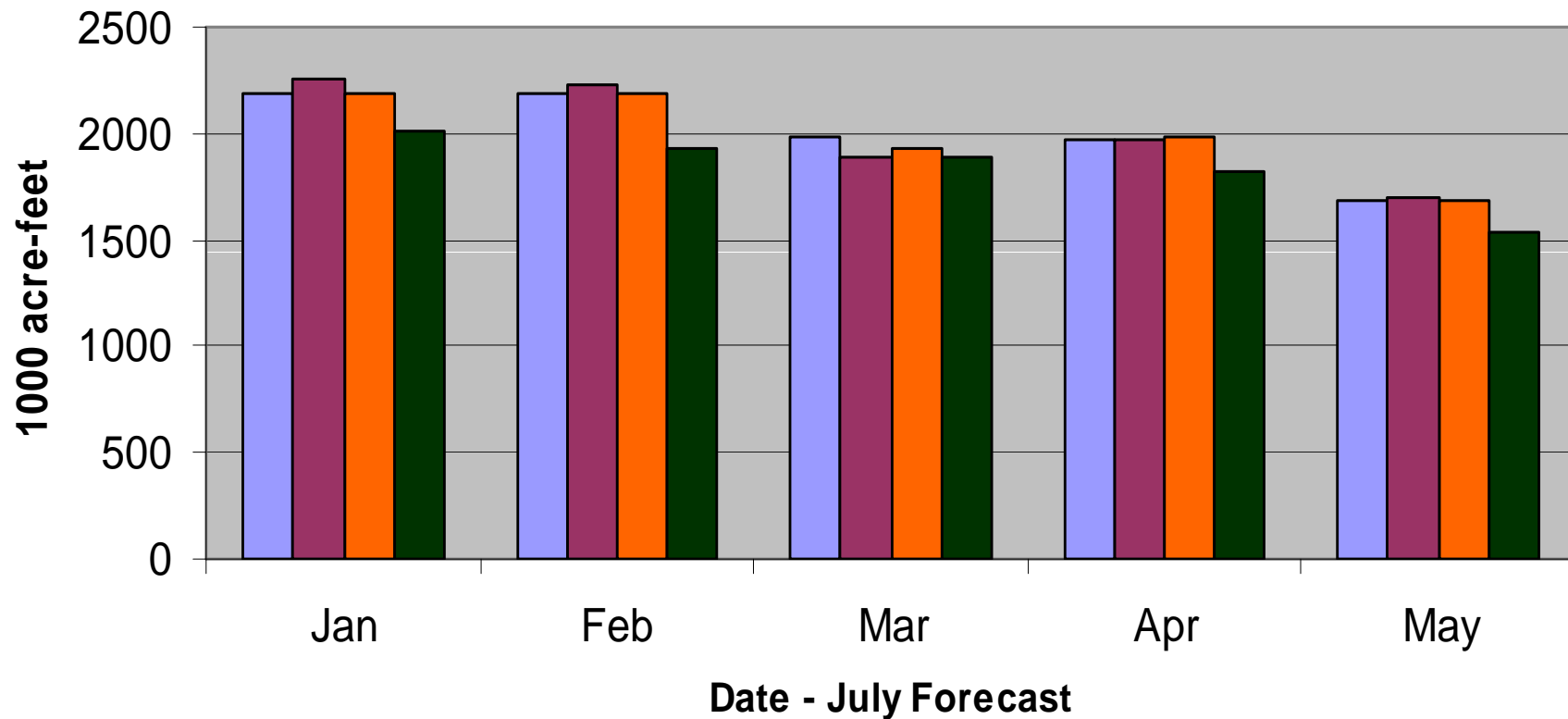


Hungry Horse Reservoir

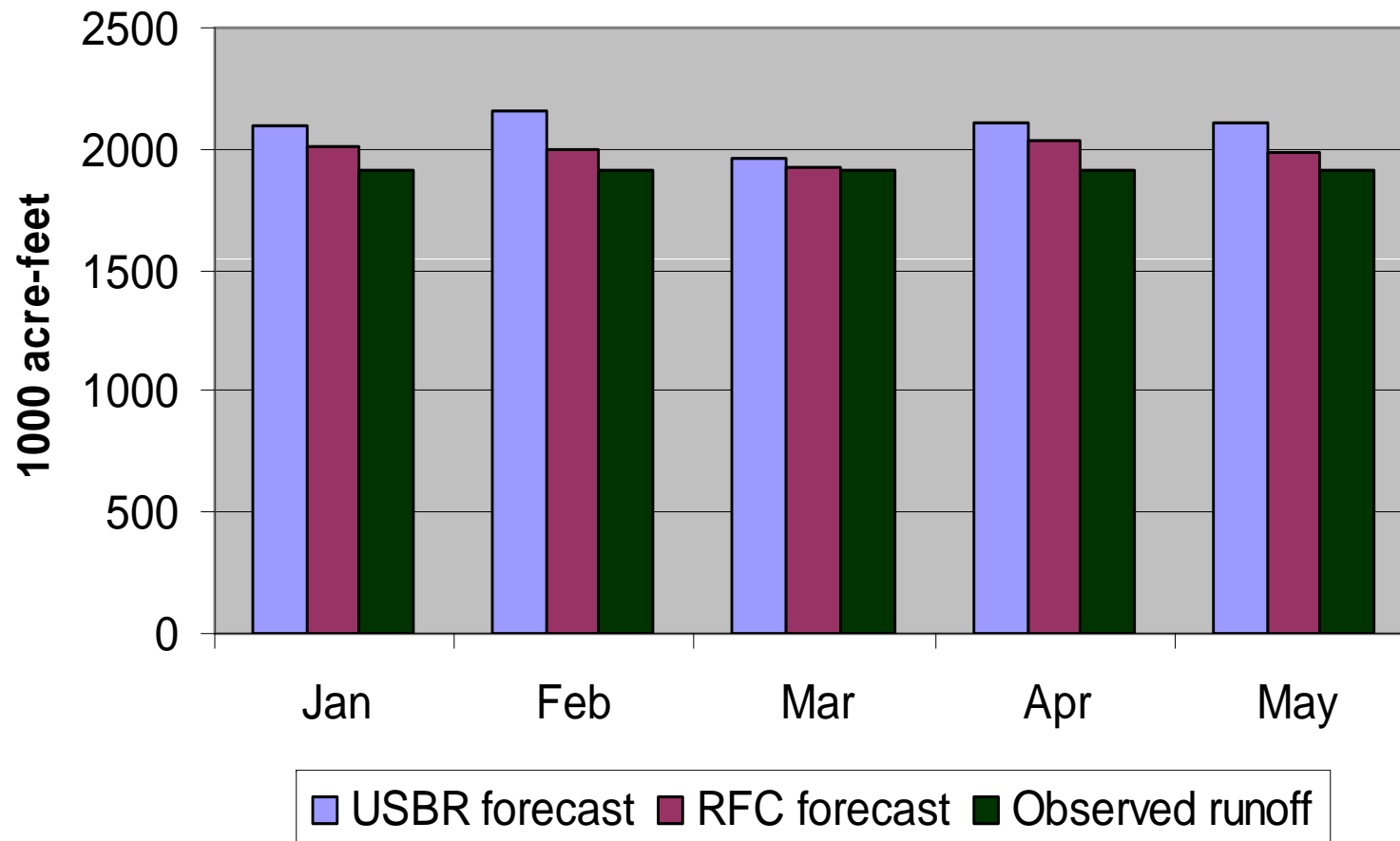
USBR Forecast Performance - 2009



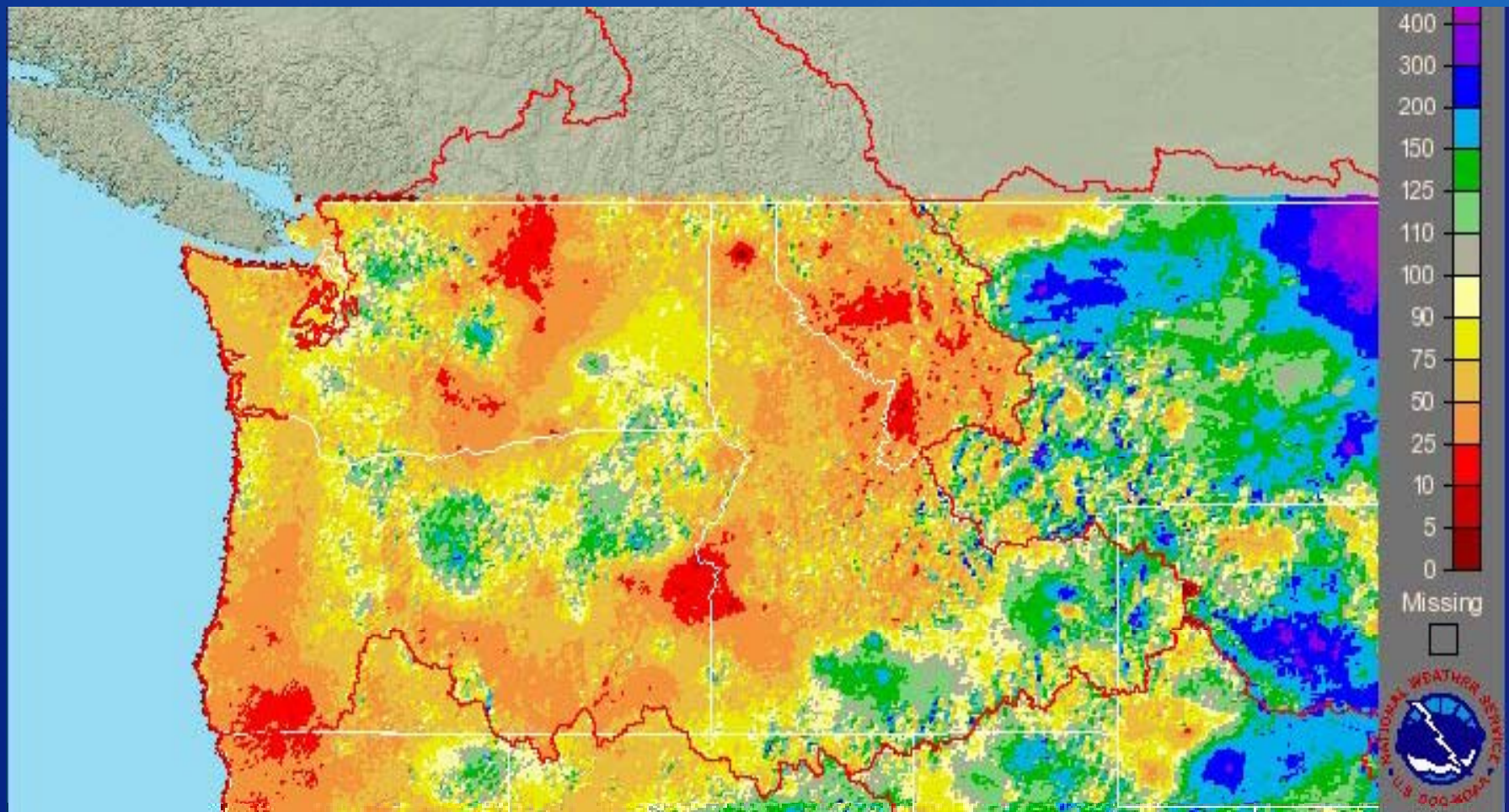
MLR PCA Adopted Observed

Hungry Horse Reservoir

April - September Inflow Forecasts - 2009

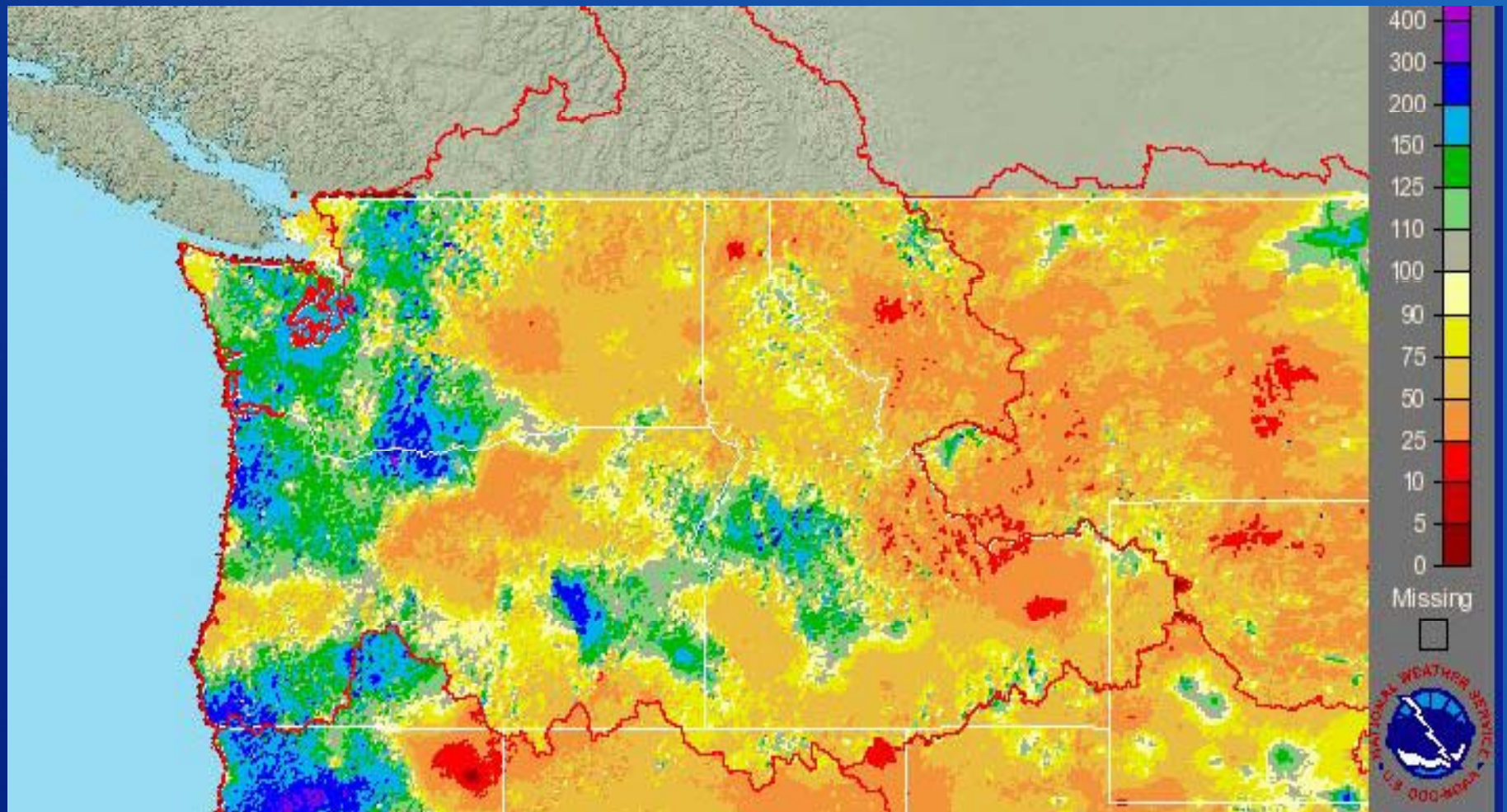


April 2009 Precipitation (% of Avg)



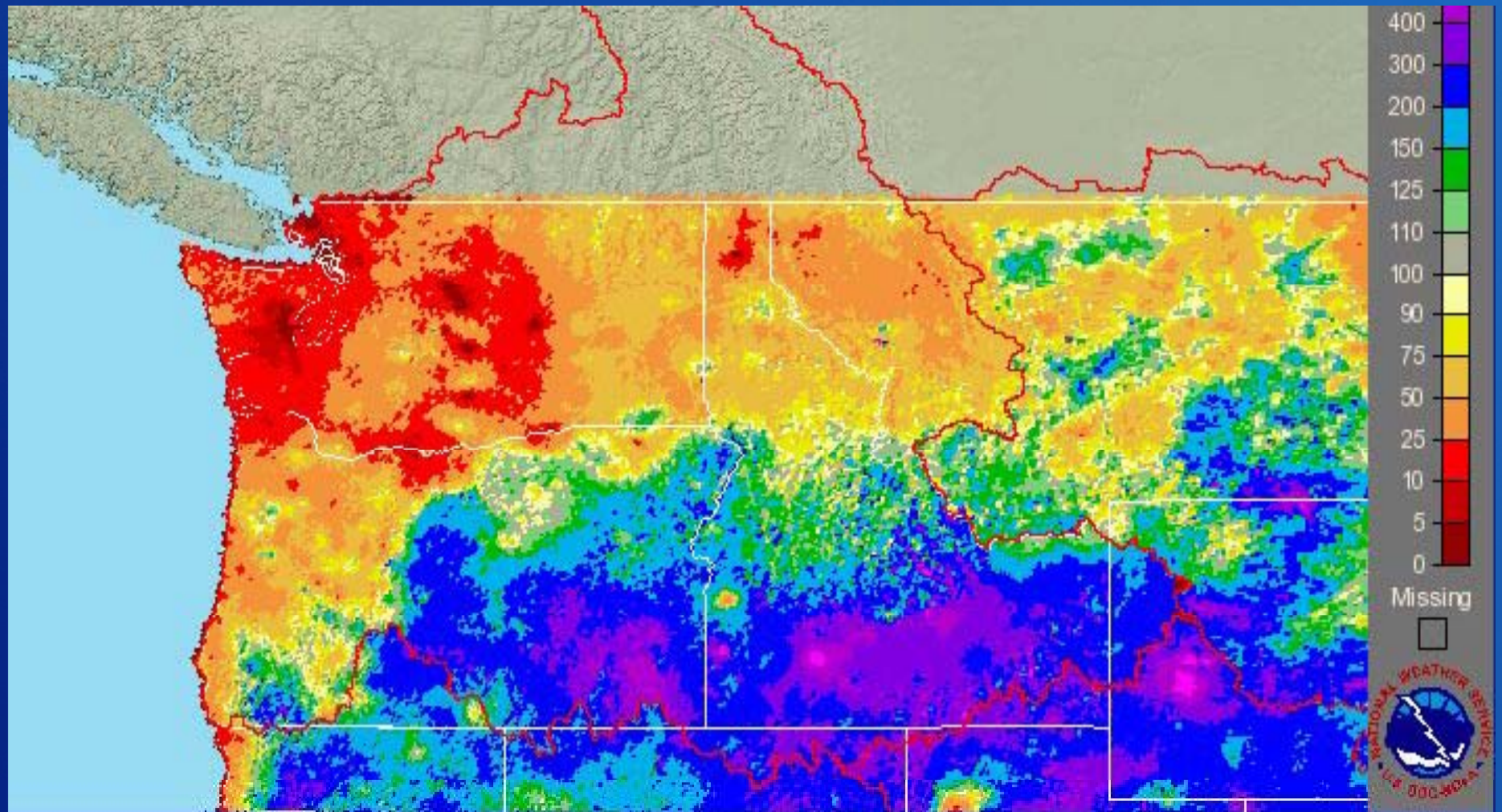
RECLAMATION

May 2009 Precipitation (% of Avg)



RECLAMATION

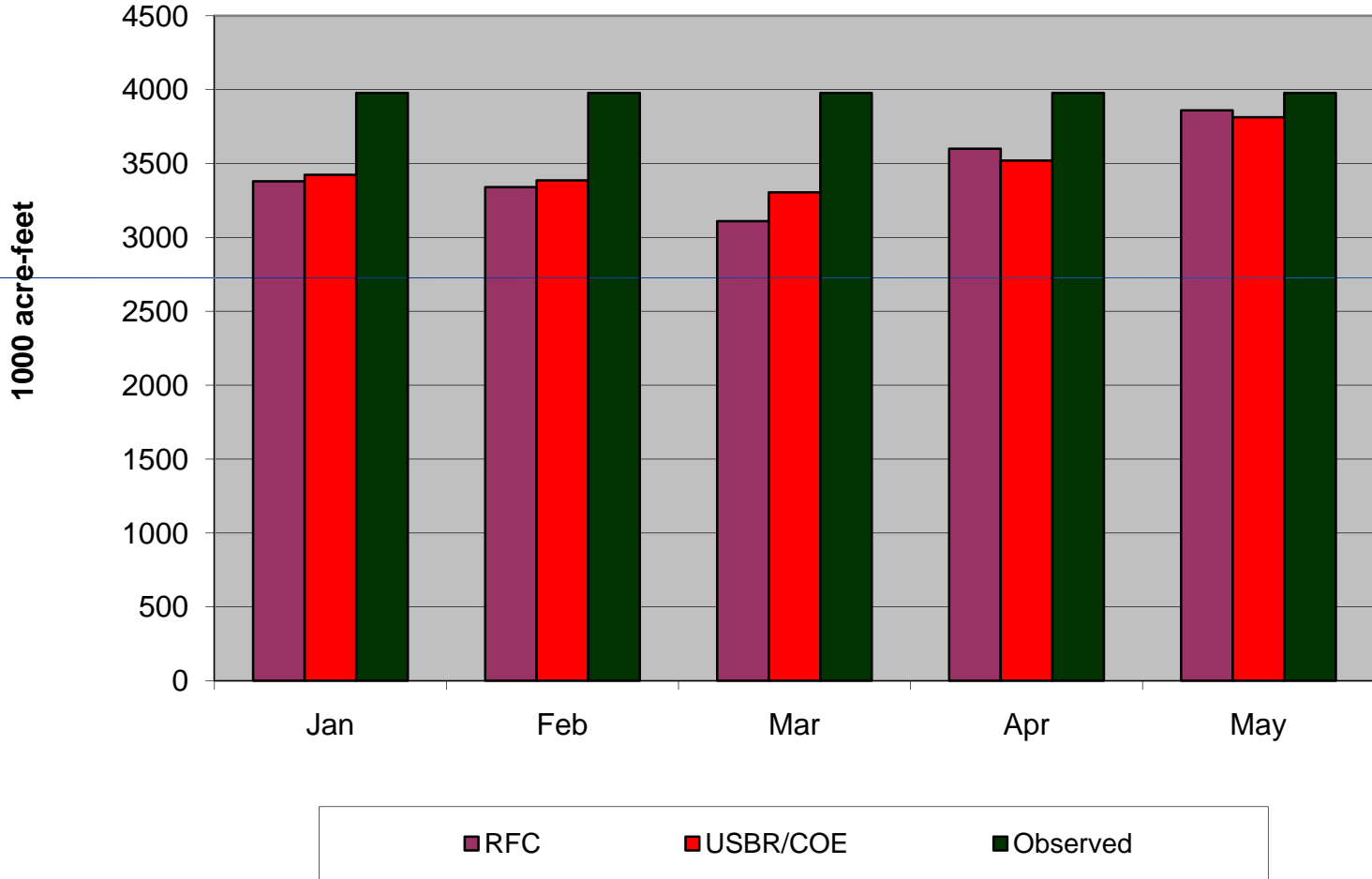
June 2009 Precipitation (% of Avg)



RECLAMATION

Snake River at Heise

April - July Inflow



Hungry Horse Mid-Month Forecast Tentative Work Plan

- **Multiple Linear Regression (MLR) forecast will be used, with current equation (updated annually).**
- **Historic forecasts going back to about 1980 will be re-created.**
- **May – September inflow will be forecast on 1st of month & mid-month, January through April.**
- **Some date will likely need to be estimated.**

Hungry Horse Mid-Month Forecast Tentative Work Plan (cont.)

Analyzing the results

Forecast results will be input into simulation model (Riverware) to determine effects to streamflows and reservoir elevation, with and without mid-month forecasts.

Results will be analyzed statistically; individual years will also be examined for specific impacts.

Other metrics for testing results will be identified.

RECLAMATION

Hungry Horse Reservoir May - September Inflow Forecasts - 2009

